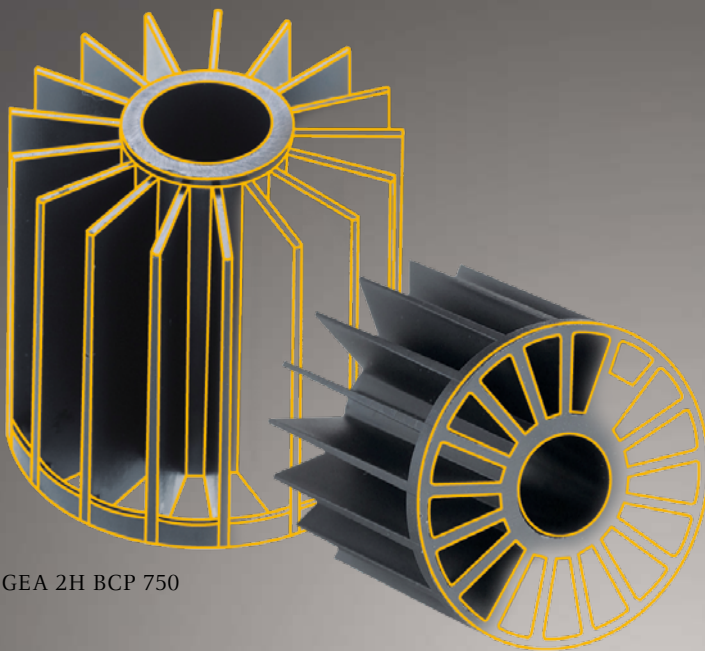


## GEA 2H Random Media with HX-Factor

Strong, random packings with large surface for moving bed reactors



GEA 2H BCP 750

Large protected surfaces with small external dimensions increase the efficiency of existing equipment or save costs on new systems through smaller reactors. GEA offers a broad range of different packings, so it is possible to find the right one for every requirement. Our experts have many years of experience in bio-film processes and will support and advise you in your selection.

The effective purification of waste water requires an active biofilm which is not too thick and a good supply of oxygen and nutrients. In aerated moving bed bioreactors (MBBR) an intensive movement of the random media in the water is ensured by the injection of oxygen or air so that surplus sludge can be removed from the surfaces and clogging can be avoided.

The correct choice of the packing, in terms of its structure, the protected surface and its specific weight, ensures that, on the one hand, a good cleaning standard is achieved and at the same time energy for the aeration is saved.

Our products have got the HX-Factor. It is our promise and stands for our unique competence in water and waste water treatment and in heat exchange (HX = HEAT EXCHANGE).

### HX-Factors of our GEA 2H Random Media

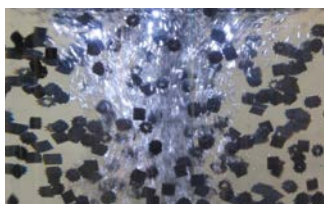
- Reduced installation costs
- Reduced maintenance expense
- Large selection
- High mechanical strength
- Long operating life

## GEA 2H Random Media

### Technical Data

Type		Total surface	Protected surface	Material	Density*	Weight of packaging	Length	Diameter	Packaging unit
		m <sup>2</sup> /m <sup>3</sup>	m <sup>2</sup> /m <sup>3</sup>						g/cm <sup>3</sup>
BCN 011		790	520	HDPE	0.95 - 0.97	160	10	11	2 m <sup>3</sup>
BCP 750-0,93		750	635	PP	0.93	158	15	15	3 m <sup>3</sup>
BCP 750-1,00		750	635	PP	1.00	172	15	15	3 m <sup>3</sup>
BCP 750-1,20		750	635	PP	1.20	210	15	15	3 m <sup>3</sup>
BCN 020		610	400	HDPE	0.95 - 0.97	110	20	20	2 m <sup>3</sup>
BCN 040		340	272	HDPE	0.95 - 0.97	100	36	44	3 m <sup>3</sup>
BCN 030		320	259	HDPE	0.95 - 0.97	110	30	30/36	3 m <sup>3</sup>
BCN 060		229	189	HDPE	0.95 - 0.97	90	50	54/65	3 m <sup>3</sup>
BCP 175		175		PP	0.90	55	45	80	0,5 m <sup>3</sup>
BCP 115		115		PP	0.90	60	90	80/110	0,5 m <sup>3</sup>
BCP 100		100		PP	0.90	55	75	140/190	0,5 m <sup>3</sup>

\*Special density available on request.



#### Random media in the bio filter

An intensive mixing of the packings, as shown in the picture, is important for an even growth of biofilm and the removal of surplus sludge.

**HDPE and PP material:** Impact-resistant and environmentally friendly; resistant against most chemicals and UV radiation.

This information has been put together with greatest care. However, any performance data given in this leaflet is subject to compliance with certain surrounding conditions and hence may vary from case to case. Further, we reserve the right to make changes at any time without notice. We strongly recommend (i) reconfirmation with GEA 2H whether this information is still fully valid, before using it for final designs and (ii) to verify performance data taking into account the actual surrounding conditions. GEA 2H takes no responsibility for any consequences due to non-compliance with these recommendations.



GEA 2H Water Technologies, Germany,  
is ISO 9001:2008 certified.

## GEA Heat Exchangers

GEA 2H Water Technologies GmbH

Dieselweg 5, 48493 Wettringen, Germany  
Phone +49 25 57 / 93 90 0, Fax +49 25 57 / 93 90 49  
2h.hx.de@gea.com, www.gea-2h.com

